

Stockingford Nursery School Newsletter November 2023



Term dates

Autumn Term 2023

Christmas Jumper Day

Term ends:

Thursday 7th December 2023

Friday 22th December 2023



Spring Term 2024

Teacher Training Day

Returning Children start:

Half term:

Term ends:

Monday 8th January 2024

Tuesday 9th January 2024

Monday 12th - Friday 16th February 2024

Friday 22nd March 2024

Parent Conduct

Unfortunately, in recent times, we have seen a rise in incidents of parents speaking to our staff in an inappropriate manner. Our nursery is a place of work and education and all members of the nursery community have the right to expect it to be a safe place where everyone treats and speaks to each other with respect. We appreciate that at times, concerns will need to be raised with us, however this should be done in an appropriate and respectful manner, so that suitable resolution can be found. **Inappropriate language or behaviour towards our staff will not be tolerated** and the nursery will take action to protect its staff, which could result in a parent being removed from the nursery and/or their future access to the premises being restricted. We trust that we can rely upon all members of the nursery community to act in accordance with these expectations.



Partnership with Parents

We understand the importance of good working relationships to effectively support your child's learning and development through an atmosphere of mutual understanding. We value working together in partnership and encourage parents/carers to participate fully in the life of our school.



Our school is committed to safeguarding and promoting the welfare of children and young people and expects all visitors, staff and volunteers to share this commitment. We aim to support a peaceful and safe school environment where positive partnerships and respect are modelled and expected.

For further information please see our Parent/Carer Conduct Policy that can be found on our nursery website in the Policy section www.stockingfordnurseryschool.com

Absence Reporting

We have made reporting your child's absence easier. Please try out our new dedicated absence messaging service, by calling us on **02476 383708** and select option **1** to leave us a message. Alternatively you can use our **MySchoolApp**. Please remember to include your child's full name and reason for their absence.

IMPORTANT !!

You must accompany your child to the member of staff on the door in Big Nursery, so they are registered inside the building safely.



Children In Need

A big thank you to everyone who helped raise money for Children In Need. We raised an amazing £73.05

Primary School Starters September 24

**You can apply for your child's Primary School place online at www.warwickshire.gov.uk/admissions
Closing date 15th January 2024**



MySchoolApp

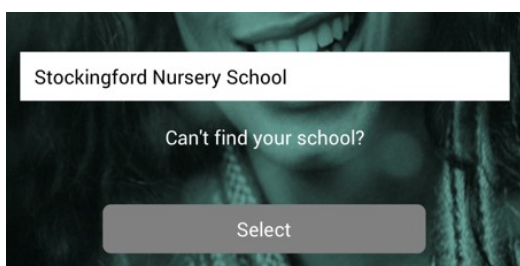


We are launching a new form of parent communication called MySchoolApp. This is a free app that you can register to. Please follow the below steps to register before 1st September so that we can start to send any communications to you ready for the start of the new school year.

To get started, you need to go to your normal app store and search for



When opening the app for the first time, you will be asked which school you want.



Type in Stockingford and you will see our name.

You then need to register, you will be asked for your name, email and phone number, and to set your password. You will be asked to accept the terms and conditions.

Once that is done, you can start using the app!

One of the many benefits of this app is that if your first language is not English, you can change your language settings by going to Menu, Settings, and then choose "Change Language".

If your child is absent from Nursery

Please remember to contact the Nursery on the day your child is going to be absent, you can either:



MySchoolapp Please see above

Telephone 02476 383708

Email parents1041@welearn365.com



(please ensure you put your child's full name and the reason for their absence in the text)

They should be at home until you feel they are well enough to come back to school. In the case of **sickness and diarrhoea** please make sure your child is symptom free for at least **48 hours** before returning to Nursery.

Please could you make sure all your phone numbers are up to date if not please let the office know of any changes.

Medical Tracker

First Aid Incident and Medication Administration Notifications

As you know, we work very hard to keep parents regularly informed about First Aid incidents and medication administration at school. To help make improvements in these areas, we have decided to use a service called Medical Tracker.

We will be launching this from the start of Spring Term, 8th January 2024.

Medical Tracker not only allows us to inform parents/carers of First Aid incidents and medication administration by email, but it also allows us to analyse the data we record.

Medical Tracker will be beneficial to you because:

1. **We can record and track First Aid incidents that involve your child**
2. **We can record and track medication administration that involves your child**
3. **You may be notified as soon as possible after a First Aid incident by email**
4. **You may be notified as soon as possible after medication has been administered by email**

To use Medical Tracker effectively, we need to collect the best email address to use to notify you of incidents.

Please fill in the slip on the letter sent out this week, **clearly writing your email address** and return it to the school office as soon as possible.



REGULAR ATTENDANCE

Regular attendance in Nursery is important to support your child's learning and sets up a good routine ready for starting school - however if your child is unwell then **please remember to let the Nursery know either by telephone , email or the schoolapp, (make sure your phone numbers are up to date).** They should be at home until you feel they are well enough to come back to school. In the case of **sickness and diarrhoea** please make sure your child is symptom free for at least **48 hours** before returning to Nursery.

If you are going on holiday please fill in a holiday form at the Reception desk.

CHILDREN'S ATTENDANCE CHAMPIONS

The role of Attendance Champions is to monitor and support families to improve attendance. Regular and punctual attendance is very important and we know from many studies that children who attend well do better in school.

In Big Nursery Tina Shepherd and Katherine King are our Attendance Champions.

In Little Nursery Jo Stubbs (Room Lead) and Katherine King (Acting Head and Lead DSL) are our Attendance Champions

Big Nursery Attendance Champions.



Katherine King



Tina Shepherd

Little Nursery Attendance Champions.



Katherine King



Jo Stubbs

BIG NURSERY - CHILDREN'S ATTENDANCE

Attendance - we aim for **85%**, and last term attendance for Big Nursery children was **81%**

LITTLE NURSERY - CHILDREN'S ATTENDANCE

Attendance - we aim for **85%**, and last term attendance for Little Nursery children was **78%**.

Big Nursery Notices

String bags

Please can you ensure that your child brings a full change of clothes including socks (and nappy changing items and wipes if required).

Make sure all coats and clothing is named.

If children choose to use drawstring bags, they can be hung on your child's coat peg. If they choose to use a small backpack they can be placed at the bottom of the coat trolley beneath their child's coat.

Child Consultation Days

Parent Consultations will be done via telephone.

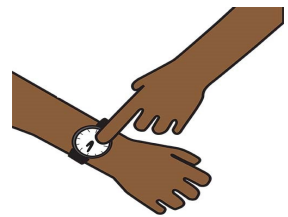
These are the planned days that your Keyworker will be ringing you:

- **Monday 11th December – Mrs Griffiths**
- **Tuesday 12th December – Mrs Grimstead**
- **Wednesday 13th December – Mrs Shepherd**
- **Thursday 14th December – Mrs Phillips**

Session Times

Nursery sessions are:

- ☞ **9.00am - 11.30am for the morning session.**
- ☞ **12.40pm - 3.10pm for the afternoon session.**



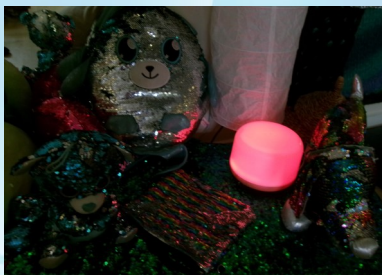
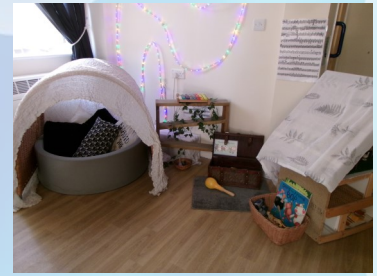
Please make sure you are on time for the start of sessions as this does have an impact on teaching time and please collect your child on time as children can become a little upset if they are collected later. Thank you.

If you wish to talk to a teacher or your child's key worker, please let us know at transition times or leave a message with Reception and we can arrange this at the beginning or end of teaching sessions.



Middle Nursery

Your children may often talk about Middle Nursery and you may be wondering what it is? Middle Nursery is a wonderful teaching space that many children access throughout their session times for many different reasons.



It is a calm, nurturing environment that supports children's wellbeing as lighting is softer and sounds/ noises are reduced. Staff provide opportunities for further interventions to work with targets including listening and attention, speech and language and co-regulation and behaviour strategies. For other children it is perfect for working in smaller groups to build up their confidence and to build positive relationships. Resources and activities include sensory and tactile resources such as a bubble wall, painting, gloop, sensory bottles and a dark den with fibre optics. Other activities include turn taking games, books, small world, imaginative play and cause and effect resources.

If your child has had the opportunity to work in Middle Nursery, they will have had a wonderful time-just ask



Little Nursery Notices

Coats and bags

As the weather has been changing, can we ask appropriate clothing is being worn/brought in depending on the weather.



Please can you make sure your child brings their winter coats to Little Nursery and you have put their name in both their coats and bags. This would be really appreciated.

In their bags could you please put nappies, wipes, (pants if toilet trained) and a spare change of clothes. Thank you.

Child Consultation Days

Parent Consultations will be done via telephone.

These are the planned days that your Keyworker will be ringing you:

- Monday 18th December or Tuesday 19th December

If your child in Little Nursery has recently had their statutory Two Year Progress Check, your key person will discuss this together with you during your meeting.

Session Times

☞ AM Session 8.45am - 11.45am

☞ PM Session 12.30pm - 3.30pm



Please could just one adult bring in your child on time for the start of session and can you make sure you pick your child up on time, Nursery Staff need to clean between sessions and children can become a little upset if they are collected later. Thank you.

Voluntary Donations

Children are welcome to feed a £1 weekly voluntary contribution to Peppa to help raise money for nursery funds for special activities and to buy new resources for the children to enjoy.

Peppa will join us in Nursery at the beginning of sessions and will be located in the corridor just outside the room, so please come and say hello.



Term and Holiday Dates

Academic Year 2023-2024



Autumn Term 2023

Teacher Training Day	Friday 1 st September 2023
Term starts:	Monday 4 th September 2023
Half term:	Monday 30 th - Friday 3 rd November 2023
Teacher Training Day	Monday 6 th November 2023
Term ends:	Friday 22 th December 2023

Spring Term 2024

Teacher Training Day	Monday 8 th January 2024
Term starts:	Tuesday 9 th January 2024
Half term:	Monday 12 th - Friday 16 th February 2024
Term ends:	Friday 22 nd March 2024

Summer Term 2024

Term starts:	Monday 8 th April 2024
May Day:	Monday 6 th May 2024
Teacher Training Day	Tuesday 7 th May 2024
Half term:	Monday 27 th May - Friday 31 st May 2024
Induction Day:	Wednesday 10 th July 2024
Term ends:	Thursday 18 th July 2024
Teacher Training Day	Friday 19 th July 2024

SEN Group

Stockingford Children and Family Centre & Library
St Paul's Road
Nuneaton
CV10 8HW

Every Monday afternoon

This session offers advice and play for under 5's

For more information and to book your place
please ring 02476 383708



Designated Safeguarding Leads (DSL's)

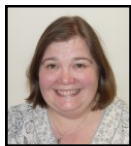
At Stockingford nursery School, our Designated Safeguarding Leads can also provide support and signpost to services.

Here are the team that can support you:

- Katherine King, , Acting Headteacher - Designated safeguard Lead
- Sally Phillips, Teacher - Deputy Safeguarding Lead
- Tina Shepherd, Senior Early Years Educator - Named Designated Safeguard Lead.
- Jo Stubbs, Senior Early Years Educator - Named Designated Safeguard Lead



Katherine King



Sally Phillips



Tina Shepherd



Jo Stubbs

*Under the Education Act 2002, schools must make arrangements to safeguard and promote the welfare of children. The Children Act 1989) requires all school staff to pass on information which gives rise to a concern about a child's welfare, including risk from neglect, physical, emotional or sexual abuse. Staff will seek, in general, to discuss any concerns with the parent/carer and discuss the need to make a referral to Children's Social Care if that is considered necessary. **This will only be done where such discussion will not place the child at increased risk of significant harm or cause undue delay.** The school will seek advice from Children's Social Care when they have reasonable cause to suspect a child may be suffering or likely to suffer significant harm. The school's Designated Safeguarding Lead carries out their responsibilities in accordance with the law and acts in the best interests of all children.'*

Well being corner

Welcome to our wellbeing corner which aims to provide support and ideas for keeping you and your child emotionally and mentally well. Each month this newsletter will offer tips, information and support for you and your child, so read through and have a go- you never know. Sometimes a small change can make a big difference!

We are lucky in our Centre to have Mental Health First Aid staff who can offer a listening ear and if need be, guide you to finding the right support and services. Please ask if you would like any further information about Mental Health and Wellbeing. Never be afraid, worried or scared to ask for support! We are always here to offer a helping hand.

Mental Health First Aiders



Sally Phillips



Sara Ward

Looking after your own mental health

The NHS Every Mind Matters website have some useful information for anyone who feels they may need a little support or advice.

Parenting or caring for a child or young person can be tough. It's important to make sure you look after your own mental wellbeing, as this will help you support yourself and those you care about. Try to recognise and acknowledge when you're feeling low or overwhelmed. Struggling with something or experiencing your own mental health problems does not make you a bad parent or carer.

It's completely normal to be worried, scared or helpless during difficult times, and feeling this way is nothing to be ashamed of. Is there a friend, fellow parent or carer you trust enough to tell how you're feeling? Maybe there's family, friends or a colleague who could support you or allow you a break? There's plenty of help out there. You should never feel like you have to cope on your own. Young Minds has lots of support for parents, including a helpline and guidance around parenting with a mental illness. Mind has information and suggestions on how to manage parenting with a mental health problem.

Scope has advice on managing stress when caring for a disabled child.

<https://www.nhs.uk/oneyou/every-mind-matters/childrens-mental-health/>

[WT.tsrc=search&WT.mc_id=EMMParentsSearch&gclid=EAlalQobChMrbLH8sjc6wIVw7HtCh07jQjWEAAYASAAEgJTvD_BwE](https://www.nhs.uk/oneyou/every-mind-matters/childrens-mental-health/?WT.tsrc=search&WT.mc_id=EMMParentsSearch&gclid=EAlalQobChMrbLH8sjc6wIVw7HtCh07jQjWEAAYASAAEgJTvD_BwE)



Well being corner

Try to focus on playing with your child this time as one of the 'Five ways to well-being'

1. Take notice
2. Keep learning
3. Connect
4. Be active and be creative
5. Play and helping

Taking time to play with your child will strengthen your bond and allow you both to get to know each other more. You will find out more about your child, share common interests and treasure special moments.

Research tells us that by sharing interests and helping others, you are more likely to feel happy. Happiness has shown that by an making act of kindness once a week over a six-weeks it will increase in your wellbeing.

With your child you could have a go at baking, sorting out the toy box together, going to the park to play football or trying fly kites you have made.

With friends, relatives or the community you could try:

- Phoning to offer support or company.
- Offer to lend a hand if you see a stranger struggling with bags or a pushchair.
- Arrange a day out for you and a friend or relative.
- Offer to help a relative with DIY or a colleague with a work project.
- Volunteer in your local community, such as helping out at a local school, hospital or care home.

Have a go and see how it makes you feel...

Makaton signs of the month November

We will be helping children to communicate through Makaton signs and spoken language.



We are proud to say we are a
Makaton accredited School



Toys
Whole formation

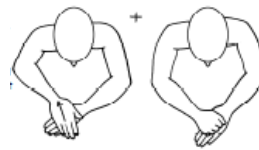


Christmas Tree



Mime holding sack
over shoulder

Father Christmas



Christmas

Slide right hand over back of
left hand towards body, then
close right hand and place on

Sleigh

Hands move quickly
backwards and forwards
together by wrist



Reindeer

Hands move up and out
to show antler size

British Values - Rule of Law

Rule of Law is linked to Managing Feelings and Behaviour in the Early Years Foundation Stage, which is part of Personal Social and Emotional Development. We need to support children in understanding their own behaviour and how it can impact upon others. At Stockingford Maintained Nursery School, we follow expectations, policies, procedures and routines. Children are supported to understand and adhere to the expectations and boundaries in our Nursery. Some of our expectations include 'kind hands', 'listening ears' and 'tidy up time'. We also support children to develop skills of sharing and turn taking. We reinforce this through Makaton, Communication in print symbols and through modelling. Children are supported to begin to understand their own & others' behaviour and to think about consequences and learn to distinguish right from wrong. Teaching staff are keen to encourage children to make positive choices, so their setting is a happy and safe place for them to learn and thrive.



What's happening at Stockingford Library



Stockingford Library

FREE Lego Club

Are you bored after school on a
Thursday?

Why not come to Lego club!

Lots of bricks and a new theme every
week.

3.30 - 4.30pm

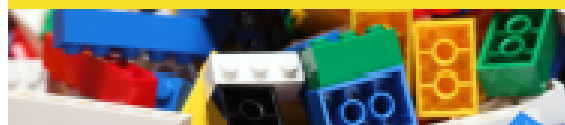
Learn, Build and Play

For children aged 4 and above with their grown-ups.

All children must be accompanied by an adult.

(This activity is not suitable for younger children due to
small Lego parts)

St. Pauls Road Nuneaton CV10 8HW



**LOVE
YOUR
LIBRARY**

Rhyme Time!



For 0-2 year olds
FREE! and their carers

Join us for rhymes for 0-2 year olds
Come and join in with rhymes suitable for
a child from birth to toddler.

THURSDAYS
11am - 11:30am

You are warmly invited to choose some books
before you leave. We are so happy to welcome
you into our Library and we hope you will have
lots of fun with us.



**LOVE
YOUR
LIBRARY**

Warwickshire Schools' Inclusion Charter

Inclusion is Everyone's Responsibility

Our Vision:

For schools to be places where everyone feels valued, included, safe, supported and welcome. We will work together to enable all our children and young people in Warwickshire to lead a fulfilling life and be part of their community.

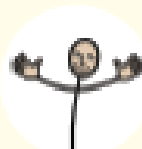
The Charter:

This charter sets out what all children and young people and their families should expect from schools in Warwickshire, in line with the SEND Code of Practice.

Welcome and Care

We will:

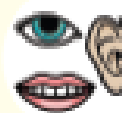
- Understand that every child is an individual
- Recognise the value of inclusion
- Make time to get to know you and what is important to you and your family
- Establish and build on positive relationships
- Make time to respond to your needs
- Work closely with all relevant people to ensure successful transitions
- Ensure children and young people's voices are at the heart of all we do



Communicate

We will:

- Listen calmly and respectfully, with patience, ensuring you feel heard and understood.
- Establish how to provide and seek information in a way you can access and understand
- Recognise all behaviour is a form of communication
- Explain what can be done and any limitations
- Communicate in a way that means you can participate in planning and decision making
- Provide clear guidance on who to contact and respond promptly
- Make you comfortable by using positive and helpful language
- Create and maintain communication friendly environments



Developing and nurturing each of these commitments to build

TRUST



Value and Include

We will:

- Remember inclusion is everyone's responsibility
- Be proactive in providing reasonable adjustments
- Ensure our SENCo is able to support families and staff
- Inform and support you of any planned changes as soon as possible
- Ensure that children and young people with SEND are valued and included in pupil voice activities
- Identify needs early and assess, plan, do, review with support from appropriate agencies
- Ensure our children and young people have a trusted person who checks in with them at least weekly
- Have a 'can do' attitude and build on everyone's strengths
- Recognise and meet the training needs of our staff



Work in Partnership

We will:

- Give you opportunities to share your views
- Do our best to understand and consider your ideas
- Involve you in developing shared plans for you and our school
- Value you as an equal partner and recognise your experience and knowledge
- Understand that every family is different and has different resources
- Engage with community groups
- Collaborate across settings to share good practice
- Work together with you and other people to recognise need and support you on your journey as a family



Signatures:

[Signature]

Leader of Warwickshire County Council

[Signature]

Chair of Warwickshire Parent Carer Voice

[Signature]

On behalf of Schools Consortia and Area Networks

[Signature]

On behalf of IMPACT (Young People's Forum for SEND)

IMPACT logo © IMPACT Software Ltd 2018-2022 www.impact.com



Adapted with permission from Gov of so Partnerships



Scan for SEND Local Offer



Stockingford Nursery School Children & Family Centre and Library St Pauls Road, Nuneaton CV10 8HW



TRUE COST OF LIVING

The cost of living crisis is having an impact on all of us. But as food and energy prices soar, people already struggling to afford the essentials are being pushed into impossible decisions.

Take action

PAY
THE BILLS

EAT
DINNER



WHAT CAN WAIT?

Foodbanks partner with a wide range of care professionals such as doctors, health visitors, social workers and police to identify people in crisis and issue them with a foodbank voucher.

Stockingford Nursery School can issue a food bank voucher to use locally. Please pop into reception anytime for further information.

Drop in for support and advice
for all families in Warwickshire.

Monday - 12:00pm - 2:00pm

Stockingford Children and Family Centre

Family Support Worker
Duty Line Telephone
Number

01926 412412

9am - 4pm

Monday - Friday

For families, children
and young people 0-19
years old, or 0-25
years with additional
needs



The Early Help and
Targeted Support Team



CHILDREN
& FAMILY
CENTRE



Warwickshire
County Council





Nuneaton & Bedworth

Grub and Hubs



Are you in need of a warm space, and some free/cheap food over the winter period?

We have brought some information together into one website which shows where you can find cheap/free food and warm spaces this winter.



Scan this QR code to head to the website!

Do you run a warm space or free/cheap food opportunity? Or do you know of one that we haven't yet got on our site? Drop us an email to nuneatongrubandhubs@gmail.com

An initiative developed by:



and local volunteers

Advice & Support



CHAT Health - A texting advice service for parents and carers of the pre-school child.

If you have any questions about your pre-school child, or your own health and well-being you can use our texting service 07520 615293 anytime. A health visitor will aim to text you back within 2 hours in normal working hours (Monday to Friday 9am to 5pm, excluding Bank Holidays).

Please note we support messaging from UK numbers only, which will be charged at your normal rate.

The Early Help and Targeted Support Team

Family Support Drop In for advice for all families in Warwickshire

For families, children and young people 0-19 years old, or 0-25 years with additional needs

Duty Line 01926 412412 - 9am – 4pm Monday – Friday



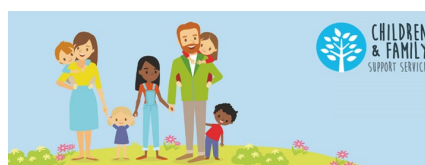
Drop In Sessions
Free and every week

Monday 12.00-2.00pm	Stockingford Children and Family Centre St Pauls Road, Nuneaton CV10 8HW
Tuesday 10.00am-12.00pm	St Michaels Children and Family Centre Hazel Grove, Bedworth CV12 9DA
Thursday 1.15-3.15pm	Camp Hill Children and Family Centre Hollystitches Road, Nuneaton CV10 9QA
Friday 12.00-2.00pm	Riversley Park Children and Family Centre Coton Road, Nuneaton CV11 5TY
Please note that times and dates may change during school holidays.	

Family Information Service (FIS)

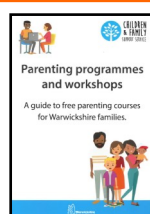
We provide information, advice and one-to-one support for families with children and young people aged 0 to 25 across Warwickshire on issues including:

- family relationships
- finance
- housing
- parenting support
- special educational needs and disabilities (SEND)
- childcare health and wellbeing



Phone: 01926 742274

Website: <https://www.warwickshire.gov.uk/children-families>



Parenting Information

Parenting Programmes and 2 Hour Workshops

Please visit the link below:

<http://childrenandfamilies.eventbrite.com>

