

# Stockingford Nursery School Newsletter October 2023



## Half Term



Nursery will be closed for half-term between  
30<sup>th</sup> October - 3<sup>rd</sup> November

The Nursery will also be closed for all  
children on Monday 6<sup>th</sup> November for a  
Teacher Training Day.

Nursery will re-open for all children on  
Tuesday 7<sup>th</sup> November .



### Term dates

#### Autumn Term 2023

Half term:	Monday 30 <sup>th</sup> - Friday 3 <sup>rd</sup> November
Teacher Training Day	Monday 6 <sup>th</sup> November
World Diabetes Day	Tuesday 14 <sup>th</sup> November - Details to follow
Children In Need Day	Friday 17 <sup>th</sup> November
Term ends:	Friday 22 <sup>th</sup> December

#### Spring Term 2024

Teacher Training Day	Monday 8 <sup>th</sup> January
Returning Children start:	Tuesday 9 <sup>th</sup> January
Half term:	Monday 12 <sup>th</sup> - Friday 16 <sup>th</sup> February
Term ends:	Friday 22 <sup>nd</sup> March

### Food Bank Vouchers

Stockingford Nursery School can issue Food Bank Vouchers for families struggling with the cost of living crisis to use locally. Just pop into Reception for more information.

### Absence Reporting

We have made reporting your child's absence easier. Please try out our new dedicated absence messaging service, by calling us on **02476 383708** and **select option 1** to leave us a message. Alternatively you can use our **MySchoolApp**. Please remember to include your child's full name and reason for their absence.

### Yellow Zigzags

We have zig-zag parking restrictions outside nursery to keep your child and others safe. Please **DO NOT** park on these as you are putting your child's safety and the safety of others at risk of danger.

We have notified the police who may take action, as this is a parking offence.

*You are breaking the law and could receive a fine.*

### IMPORTANT !!

**You must accompany your child to the member of staff on the door in Big Nursery, so they are registered inside the building safely.**

## Partnership with Parents

At Stockingford Nursery School we are very fortunate to have positive relationships with our parents and carers that are well supported through our keyworker process and open door policy.



We understand the importance of good working relationships to effectively support your child's learning and development through an atmosphere of mutual understanding. We value working together in partnership and encourage parents/carers to participate fully in the life of our school.

Our school is committed to safeguarding and promoting the welfare of children and young people and expects all visitors, staff and volunteers to share this commitment. We aim to support a peaceful and safe school environment where positive partnerships and respect are modelled and expected.

For further information please see our Parent/Carer Conduct Policy that can be found on our nursery website in the Policy section [www.stockingfordnurseryschool.com](http://www.stockingfordnurseryschool.com)

## MySchoolApp

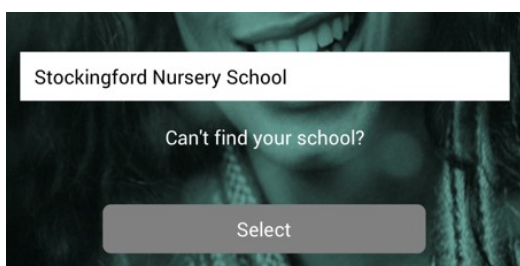


We are launching a new form of parent communication called MySchoolApp. This is a free app that you can register to. Please follow the below steps to register before 1st September so that we can start to send any communications to you ready for the start of the new school year.

To get started, you need to go to your normal app store and search for



When opening the app for the first time, you will be asked which school you want.



Type in Stockingford and you will see our name.

You then need to register, you will be asked for your name, email and phone number, and to set your password. You will be asked to accept the terms and conditions.

Once that is done, you can start using the app!

One of the many benefits of this app is that if your first language is not English, you can change your language settings by going to Menu, Settings, and then choose "Change Language".

### If your child is absent from Nursery

Please remember to contact the Nursery on the day your child is going to be absent, you can either:



**Myschoolapp** Please see above

**Telephone** 02476 383708

**Email** [parents1041@welearn365.com](mailto:parents1041@welearn365.com)



(please ensure you put your child's full name and the reason for their absence in the text)

They should be at home until you feel they are well enough to come back to school. In the case of sickness and diarrhoea please make sure your child is symptom free for at least 48 hours before returning to Nursery.

Please could you make sure all your phone numbers are up to date if not please let the office know of any changes.

# REGULAR ATTENDANCE

Regular attendance in Nursery is important to support your child's learning and sets up a good routine ready for starting school - however if your child is unwell then **please remember to let the Nursery know either by telephone , email or the schoolapp, (make sure your phone numbers are up to date).** They should be at home until you feel they are well enough to come back to school. In the case of **sickness and diarrhoea** please make sure your child is symptom free for at least **48 hours** before returning to Nursery.

**If you are going on holiday please fill in a holiday form at the Reception desk.**

## CHILDREN'S ATTENDANCE CHAMPIONS

The role of Attendance Champions is to monitor and support families to improve attendance. Regular and punctual attendance is very important and we know from many studies that children who attend well do better in school.

In Big Nursery Tina Shepherd and Katherine King are our Attendance Champions.

In Little Nursery Jo Stubbs (Room Lead) and Katherine King (Acting Head and Lead DSL) are our Attendance Champions

### Big Nursery Attendance Champions.



Katherine King



Tina Shepherd

### Little Nursery Attendance Champions.



Katherine King



Jo Stubbs

# Big Nursery Notices

## String bags

Please can you ensure that your child brings a full change of clothes including socks (and nappy changing items and wipes if required).

**Make sure all coats and clothing is named.**

If children choose to use drawstring bags, they can be hung on your child's coat peg. If they choose to use a small backpack they can be placed at the bottom of the coat trolley beneath their child's coat.

## Jewellery

Please could children with pierced ears wear studs in their ears for safety reasons, and no necklaces or bracelets are to be worn in Little Nursery for safety reasons. We advise jewellery be kept at home so it does not get lost or broken.





## Wellies

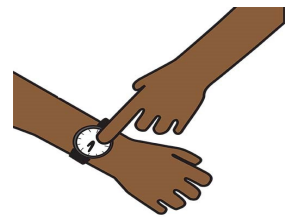
We would be very grateful if you have any unwanted wellies your child has outgrown that you would like to donate to the Nursery to support outdoor learning and Forest School sessions.



## Session Times

Nursery sessions are:

-  **9.00am - 11.30am for the morning session.**
-  **12.40pm - 3.10pm for the afternoon session.**



Please make sure you are on time for the start of sessions as this does have an impact on teaching time and please collect your child on time as children can become a little upset if they are collected later. Thank you.

If you wish to talk to a teacher or your child's key worker, please let us know at transition times or leave a message with Reception and we can arrange this at the beginning or end of teaching sessions.



# Little Nursery Notices

## Coats and bags

As the weather has been changing, can we ask appropriate clothing is being worn/brought in depending on the weather.



Please can you make sure your child brings their winter coats to Little Nursery and you have put their name in both their coats and bags. This would be really appreciated.

In their bags could you please put nappies, wipes, (pants if toilet trained) and a spare change of clothes. Thank you.

## Jewellery

Please could children with pierced ears wear studs in their ears for safety reasons, and no necklaces or bracelets are to be worn in Little Nursery for safety reasons. We advise jewellery be kept at home so it does not get lost or broken.



## Pull-Ups

Please could children wear 'pull-ups' only if they are being potty trained, as some of the children are getting upset if they have to be changed.



## Session Times

- ☞ AM Session 8.45am - 11.45am
- ☞ PM Session 12.30pm - 3.30pm



Please could just one adult bring in your child on time for the start of session and can you make sure you pick your child up on time, Nursery Staff need to clean between sessions and children can become a little upset if they are collected later. Thank you.

## Voluntary Donations

Children are welcome to feed a £1 weekly voluntary contribution to Peppa to help raise money for nursery funds for special activities and to buy new resources for the children to enjoy.

Peppa will join us in Nursery at the beginning of sessions and will be located in the corridor just outside the room, so please come and say hello.



# Term and Holiday Dates

## Academic Year 2023-2024



### Autumn Term 2023

Teacher Training Day	Friday 1 <sup>st</sup> September 2023
Term starts:	Monday 4 <sup>th</sup> September 2023
Half term:	Monday 30 <sup>th</sup> - Friday 3 <sup>rd</sup> November 2023
Teacher Training Day	Monday 6 <sup>th</sup> November 2023
Term ends:	Friday 22 <sup>th</sup> December 2023

### Spring Term 2024

Teacher Training Day	Monday 8 <sup>th</sup> January 2024
Term starts:	Tuesday 9 <sup>th</sup> January 2024
Half term:	Monday 12 <sup>th</sup> - Friday 16 <sup>th</sup> February 2024
Term ends:	Friday 22 <sup>nd</sup> March 2024

### Summer Term 2024

Term starts:	Monday 8 <sup>th</sup> April 2024
May Day:	Monday 6 <sup>th</sup> May 2024
Teacher Training Day	Tuesday 7 <sup>th</sup> May 2024
Half term:	Monday 27 <sup>th</sup> May - Friday 31 <sup>st</sup> May 2024
Induction Day:	Wednesday 10 <sup>th</sup> July 2024
Term ends:	Thursday 18 <sup>th</sup> July 2024
Teacher Training Day	Friday 19 <sup>th</sup> July 2024



We want all children in Warwickshire to be...



HEARD



SAFE



HEALTHY



SKILLED



HAPPY



**But what is it like for you? - Let us know:**  
**[www.warwickshire.gov.uk/schoolexp](http://www.warwickshire.gov.uk/schoolexp)**

Warwickshire's Young People's Forum - IMPACT want to help schools understand what school is like for children and young people and what could help make this better. This survey is for all Warwickshire children and young people, but with a keen interest in the views of those who have support needs.

To help gather views, young people have developed some questions which they would love you to answer. -

<https://www.warwickshire.gov.uk/schoolexp>

Please let children and young people know the opportunity is available and offer to support them to record their views if they would benefit from this. **The survey is open until October Half-term 2023**



## Designated Safeguarding Leads (DSL's)

At Stockingford nursery School, our Designated Safeguarding Leads can also provide support and signpost to services.

Here are the team that can support you:

- Katherine King, , Acting Headteacher - Designated safeguard Lead
- Sally Phillips, Teacher - Deputy Safeguarding Lead
- Tina Shepherd, Senior Early Years Educator - Named Designated Safeguard Lead.



Katherine King



Sally Phillips



Tina Shepherd

*Under the Education Act 2002, schools must make arrangements to safeguard and promote the welfare of children. The Children Act 1989 requires all school staff to pass on information which gives rise to a concern about a child's welfare, including risk from neglect, physical, emotional or sexual abuse. Staff will seek, in general, to discuss any concerns with the parent/carer and discuss the need to make a referral to Children's Social Care if that is considered necessary. **This will only be done where such discussion will not place the child at increased risk of significant harm or cause undue delay.** The school will seek advice from Children's Social Care when they have reasonable cause to suspect a child may be suffering or likely to suffer significant harm. The school's Designated Safeguarding Lead carries out their responsibilities in accordance with the law and acts in the best interests of all children.'*

## Well being corner

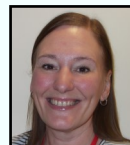
Welcome to our wellbeing corner which aims to provide support and ideas for keeping you and your child emotionally and mentally well. Each month this newsletter will offer tips, information and support for you and your child, so read through and have a go- you never know. Sometimes a small change can make a big difference!

We are lucky in our Centre to have Mental Health First Aid staff who can offer a listening ear and if need be, guide you to finding the right support and services. Please ask if you would like any further information about Mental Health and Wellbeing. Never be afraid, worried or scared to ask for support! We are always here to offer a helping hand.

### Mental Health First Aiders



Sally Phillips



Sara Ward

### Looking after your own mental health

The NHS Every Mind Matters website have some useful information for anyone who feels they may need a little support or advice.

Parenting or caring for a child or young person can be tough. It's important to make sure you look after your own mental wellbeing, as this will help you support yourself and those you care about. Try to recognise and acknowledge when you're feeling low or overwhelmed. Struggling with something or experiencing your own mental health problems does not make you a bad parent or carer.

It's completely normal to be worried, scared or helpless during difficult times, and feeling this way is nothing to be ashamed of. Is there a friend, fellow parent or carer you trust enough to tell how you're feeling? Maybe there's family, friends or a colleague who could support you or allow you a break? There's plenty of help out there. You should never feel like you have to cope on your own. [Young Minds has lots of support for parents](#), including a helpline and guidance around [parenting with a mental illness](#). Mind has information and suggestions on how to manage [parenting with a mental health problem](#).

Scope has advice on [managing stress when caring for a disabled child](#).

<https://www.nhs.uk/oneyou/every-mind-matters/childrens-mental-health/>

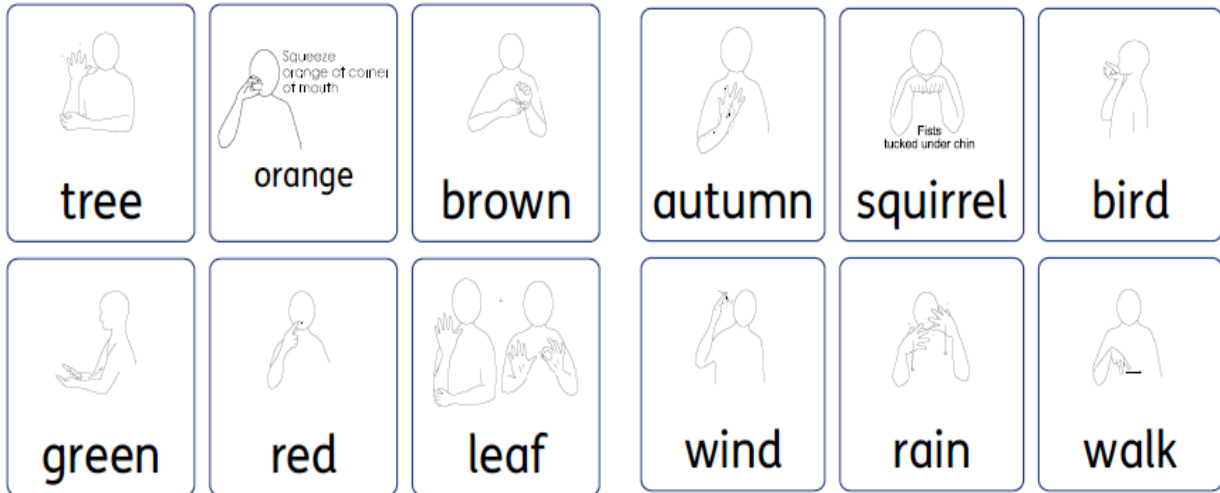
[WT.tsrc=search&WT.mc\\_id=EMMParentsSearch&gclid=EAlalQobChMlrLH8sjc6wIVw7HtCh07jQjWEAAYASAAEgJTvD\\_BwE](https://www.nhs.uk/oneyou/every-mind-matters/childrens-mental-health/?WT.tsrc=search&WT.mc_id=EMMParentsSearch&gclid=EAlalQobChMlrLH8sjc6wIVw7HtCh07jQjWEAAYASAAEgJTvD_BwE)

# Makaton signs of the Month October

We will be helping children to communicate through Makaton signs and spoken language.



We are proud to say we are a  
Makaton accredited School



## British Values Democracy

Democracy is where everyone is treated equally and has equal rights. At Nursery we support children with their personal, social and emotional development by giving them opportunities to develop their self-confidence and self-awareness. Children are encouraged to express their views and value the opinions and ideas of others. Through 'In the Moment Planning' we encourage children to make choices and decisions about their learning and what they would like to explore. Teaching supports taking turns, sharing, collaborating and making decisions together. Adults also give children opportunities to develop enquiring minds by encouraging them to ask questions and to talk about their feelings.



# What's happening at Stockingford Library



## FINES AMNESTY

The whole month of October is 'Fines Amnesty' where anyone with an outstanding Library book can return it without paying a fine. If you have lost your Library card, you can get a free new one.



### Stockingford Library

**FREE** Lego Club

Are you bored after school on a Thursday?

Why not come to Lego club!

Lots of bricks and a new theme every week.

3.30 - 4.30pm

### Learn, Build and Play

For children aged 4 and above with their grown-ups.  
All children must be accompanied by an adult.  
(This activity is not suitable for younger children due to small Lego parts)

St. Pauls Road Nuneaton CV10 8HW



## Rhyme Time!



For 0-2 year olds  
**FREE!** and their carers

Join us for rhymes for 0-2 year olds  
Come and join in with rhymes suitable for a child from birth to toddler.

### THURSDAYS

11am - 11:30am

You are warmly invited to choose some books before you leave. We are so happy to welcome you into our Library and we hope you will have lots of fun with us.





# BOOK Magic

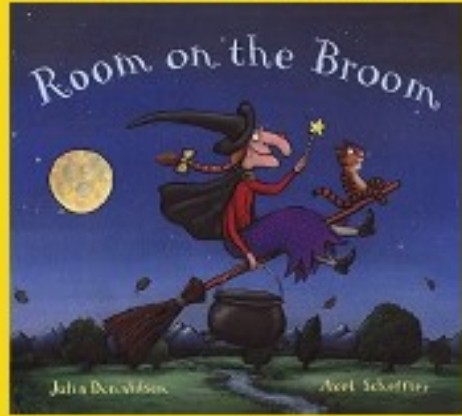
**MONDAY  
30TH OCTOBER**

**10.30 – 11.30AM**

**JOIN US IN THE LIBRARY TO HEAR THE  
STORY 'ROOM ON THE BROOM'  
FOLLOWED BY SPOOKY CRAFT.**

**ALL WELCOME.**

**STOCKINGFORD LIBRARY  
ST PAULS ROAD  
CV10 8HW**



# Warwickshire Schools' Inclusion Charter

## Inclusion is Everyone's Responsibility

### Our Vision:

For schools to be places where everyone feels valued, included, safe, supported and welcome. We will work together to enable all our children and young people in Warwickshire to lead a fulfilling life and be part of their community.

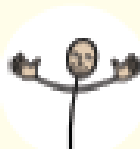
### The Charter:

This charter sets out what all children and young people and their families should expect from schools in Warwickshire, in line with the SEND Code of Practice.

### Welcome and Care

#### We will:

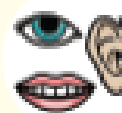
- Understand that every child is an individual
- Recognise the value of inclusion
- Make time to get to know you and what is important to you and your family
- Establish and build on positive relationships
- Make time to respond to your needs
- Work closely with all relevant people to ensure successful transitions
- Ensure children and young people's voices are at the heart of all we do



### Communicate

#### We will:

- Listen calmly and respectfully, with patience, ensuring you feel heard and understood.
- Establish how to provide and seek information in a way you can access and understand
- Recognise all behaviour is a form of communication
- Explain what can be done and any limitations
- Communicate in a way that means you can participate in planning and decision making
- Provide clear guidance on who to contact and respond promptly
- Make you comfortable by using positive and helpful language
- Create and maintain communication friendly environments



Developing and nurturing each of these commitments to build

## TRUST



### Value and Include

#### We will:

- Remember inclusion is everyone's responsibility
- Be proactive in providing reasonable adjustments
- Ensure our SENCo is able to support families and staff
- Inform and support you of any planned changes as soon as possible
- Ensure that children and young people with SEND are valued and included in pupil voice activities
- Identify needs early and assess, plan, do, review with support from appropriate agencies
- Ensure our children and young people have a trusted person who checks in with them at least weekly
- Have a 'can do' attitude and build on everyone's strengths
- Recognise and meet the training needs of our staff



### Work in Partnership

#### We will:

- Give you opportunities to share your views
- Do our best to understand and consider your ideas
- Involve you in developing shared plans for you and our school
- Value you as an equal partner and recognise your experience and knowledge
- Understand that every family is different and has different resources
- Engage with community groups
- Collaborate across settings to share good practice
- Work together with you and other people to recognise need and support you on your journey as a family



#### Signatures:

*[Signature]*

Leader of Warwickshire County Council

*[Signature]*

Chair of Warwickshire Parent Carer Voice

*[Signature]*

On behalf of Schools Consortia and Area Networks

*[Signature]*

On behalf of IMPACT (Young People's Forum for SEND)

IMPACT logo by © Wright-Thomas Ltd 2018-2021 www.impact.org.uk



Adapted with permission from Gov of us Partnerships



Scan for SEND Local Offer



# Stockingford Nursery School Children & Family Centre and Library St Pauls Road, Nuneaton CV10 8HW



## TRUE COST OF LIVING

The cost of living crisis is having an impact on all of us. But as food and energy prices soar, people already struggling to afford the essentials are being pushed into impossible decisions.

Take action

PAY  
THE BILLS

EAT  
DINNER



WHAT CAN WAIT?

Foodbanks partner with a wide range of care professionals such as doctors, health visitors, social workers and police to identify people in crisis and issue them with a foodbank voucher.

Stockingford Nursery School can issue a food bank voucher to use locally. Please pop into reception anytime for further information.

Drop in for support and advice  
for all families in Warwickshire.

**Monday - 12:00pm - 2:00pm**

Stockingford Children and Family Centre

Family Support Worker  
Duty Line Telephone  
Number

01926 412412

9am - 4pm

Monday - Friday

For families, children  
and young people 0-19  
years old, or 0-25  
years with additional  
needs



The Early Help and  
Targeted Support Team



CHILDREN  
& FAMILY  
CENTRE



Warwickshire  
County Council



# Advice & Support



**CHAT Health - A texting advice service for parents and carers of the pre-school child.**

If you have any questions about your pre-school child, or your own health and well-being you can use our texting service 07520 615293 anytime. A health visitor will aim to text you back within 2 hours in normal working hours (Monday to Friday 9am to 5pm, excluding Bank Holidays).

Please note we support messaging from UK numbers only, which will be charged at your normal rate.

## The Early Help and Targeted Support Team

**Family Support Drop In for advice for all families in Warwickshire**

For families, children and young people 0-19 years old, or 0-25 years with additional needs

**Duty Line 01926 412412 - 9am – 4pm Monday – Friday**



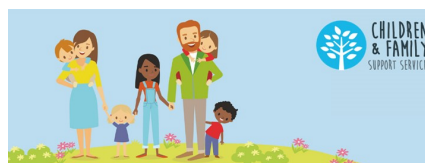
**Drop In Sessions**  
**Free and every week**

<b>Monday 12.00-2.00pm</b>	<b>Stockingford Children and Family Centre</b> St Pauls Road, Nuneaton CV10 8HW
<b>Tuesday 10.00am-12.00pm</b>	<b>St Michaels Children and Family Centre</b> Hazel Grove, Bedworth CV12 9DA
<b>Thursday 1.15-3.15pm</b>	<b>Camp Hill Children and Family Centre</b> Hollystitches Road, Nuneaton CV10 9QA
<b>Friday 12.00-2.00pm</b>	<b>Riversley Park Children and Family Centre</b> Coton Road, Nuneaton CV11 5TY
Please note that times and dates may change during school holidays.	

## Family Information Service (FIS)

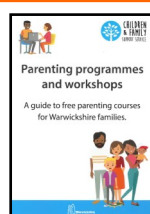
We provide information, advice and one-to-one support for families with children and young people aged 0 to 25 across Warwickshire on issues including:

- family relationships
- finance
- housing
- parenting support
- special educational needs and disabilities (SEND)
- childcare health and wellbeing



Phone: 01926 742274

Website: <https://www.warwickshire.gov.uk/children-families>



## Parenting Information

**Parenting Programmes and 2 Hour Workshops**

Please visit the link below:

<http://childrenandfamilies.eventbrite.com>

